

KRISH GROUP PRESENTS

The beautiful fragrance of life



LAYOUT PLANS



KAILASH
bungalows



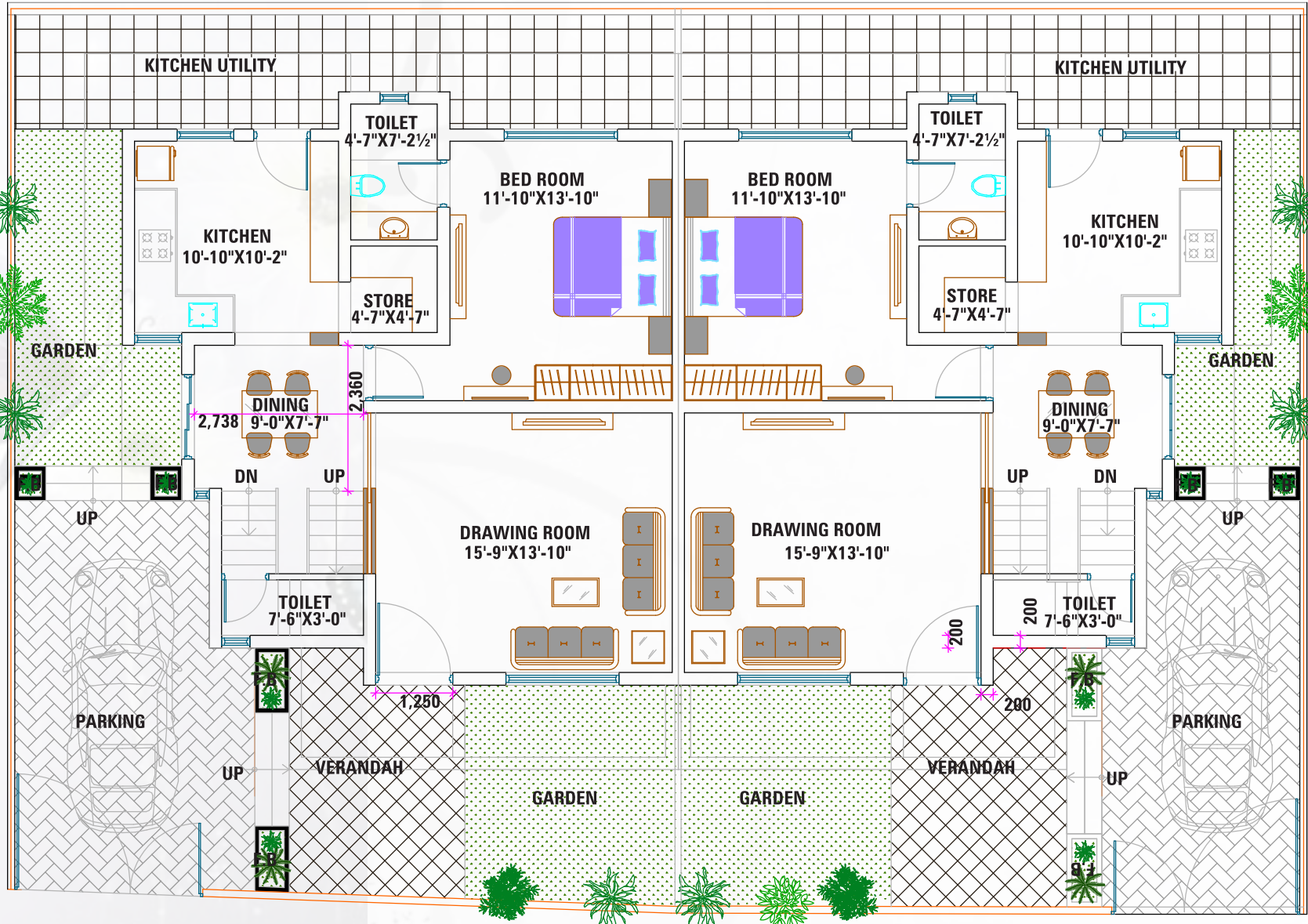





KAILASH
bunglows



GROUND FLOOR PLANS

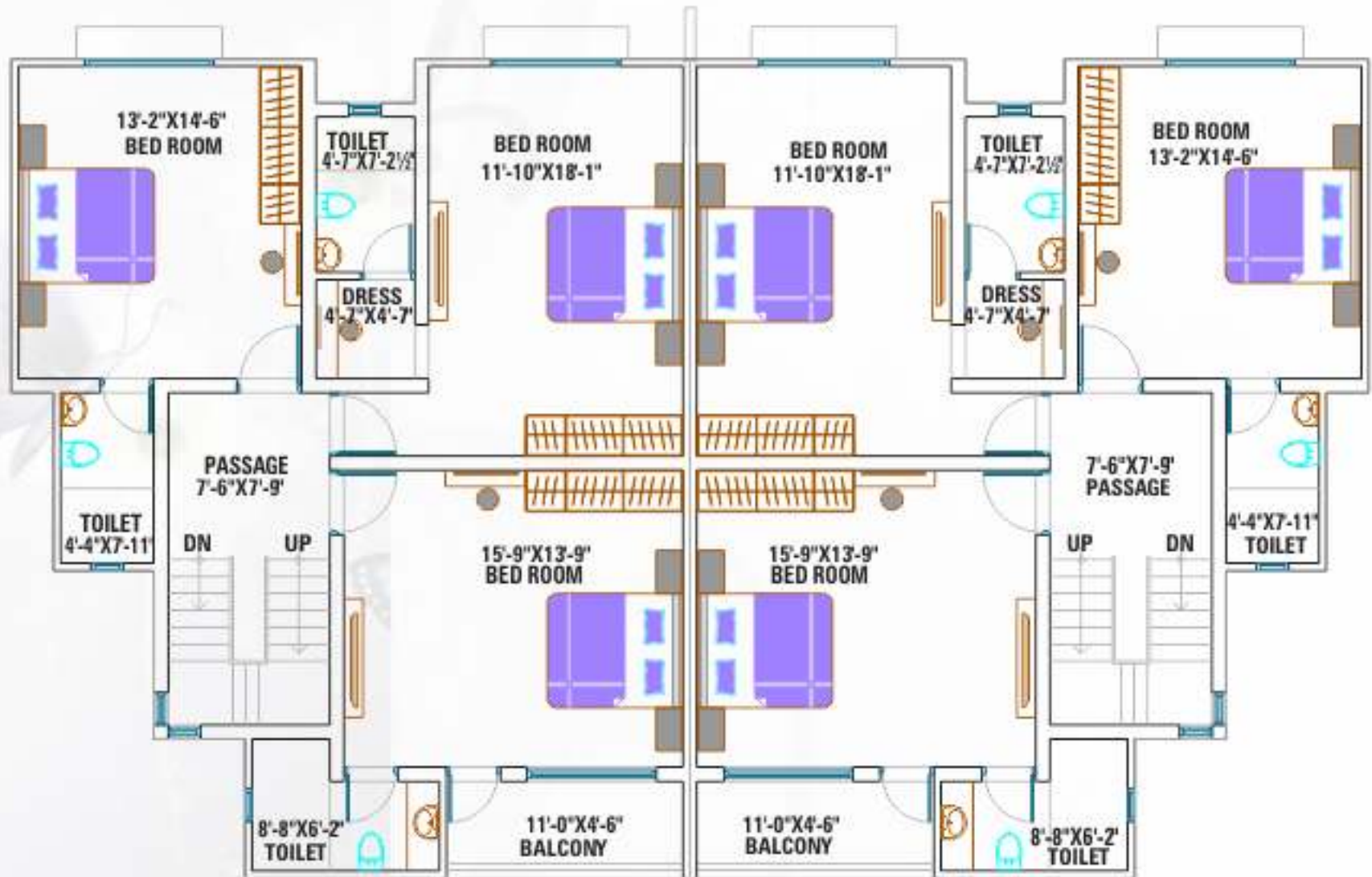


TYPICAL CUTSECTION VIEW

ground floor



FIRST FLOOR PLANS

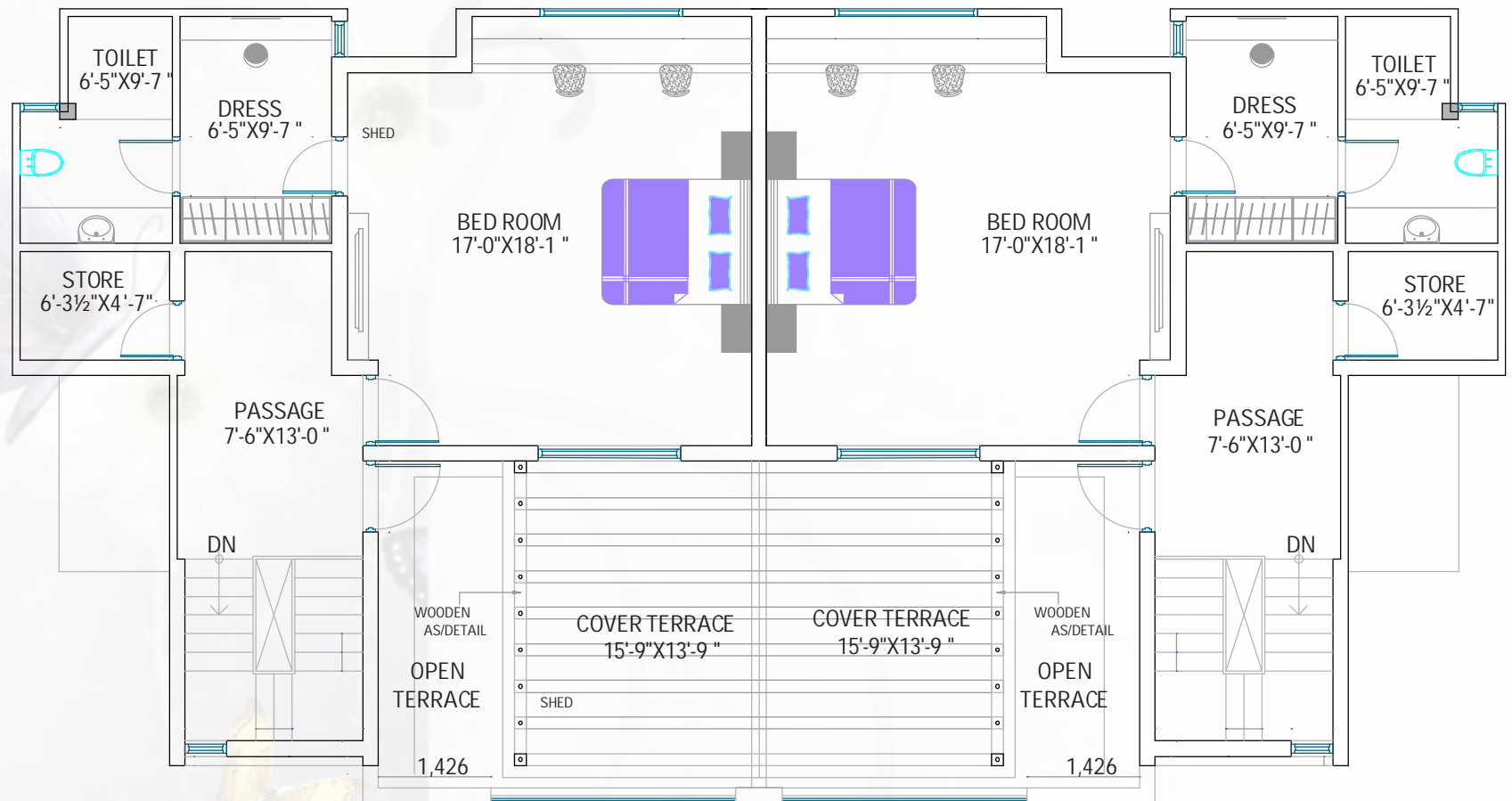


TYPICAL CUTSECTION VIEW

1st floor



SECOND FLOOR PLANS



TYPICAL CUTSECTION VIEW

2nd floor






KAILASH
bunglows

This is an aerial photograph of a residential development. The image shows several bungalows with red-tiled roofs and light-colored walls, arranged in a cluster. The houses are surrounded by lush green trees and landscaping. A road is visible on the left side of the image, with a few vehicles including a yellow truck and a white car. The overall scene is bright and sunny, with shadows cast by the trees and buildings.

SPECIFICATION:

Kitchen		Granite platform with S.S. sink. Dado on kitchen platform full height
Toilet		Full height glaze tiles. Standard c.p. fitting. elegant sanitary ware
Flooring		Premium quality vitrified tiles drawing room, premium quality in all other bedrooms
Treatment		Anti-termite treatment shall be applied by standard materials.
Doors & Windows		Decorative Main doors with mahogany wooden frame & S.S fitting. All internal solid mahogany panel doors with wooden frame & mortise lock. Fully glassed window with aluminum section with safety grill.
Electrification		Concealed ISI copper wiring and modular switches. Provision for AC point in all bedroom and drawing room. TV Point in bed room drawing room.
Walls		External double coat plaster with premium quality paint. Internal smooth plaster with wall putty.
Water		UPVC, CPVC pipe fitting. C.P. fitting good quality.



RULES AND REGULATION

All rights are reserved by developers to make any changes in plan elevation and other details.
 No external changes will be allowed.
 Internal changes shall be allowed with prior permission of an architect and shall be charged extra as in advance.
 All legal charges, UEB. Charges, VAT taxable charges of the govt borne by the members.
 Any other tax in future also applicable to the members.
 Terrace and side margin rights are reserved by the developers.
 Irregular payment may cause cancellation of booking.
 Any charges will be binding to all members.
 Developer's rights are reserved for future expansion.
 This brochure is indicative and cannot be considered as the legal document.
 The members can look at such legal documents at the office of the developers.
 Signboards as per company policy.



KAILASH bunglows





KRISH GROUP PRESENTS

KAILASH bungalows

Developer :  P & B
infrastructure (U) Ltd.

102, Ground Floor, Kailash Apartment,
Plot 7, Kataza Close, Next to City Royal Hotel,
Opp. Bugolobi Shell Petrol Station, Bugolobi,
P.O. Box 28341, Kampala-Uganda.

E-mail :
pandbinfrastructureltd@gmail.com
krishgroup2006@yahoo.com

Web :
www.krishgroupafrica.com

Contact :
Ravi Bhatia - +256712671276
~~Kirit Patel~~ - +256712498294

Marketing :
Vinay Patel - +256713260505

